

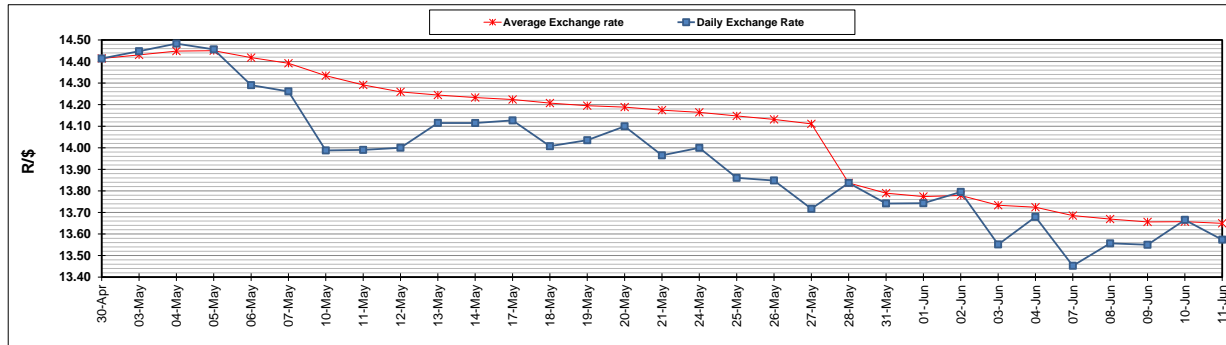
	PETROL 95 ULP	PETROL 93 ULP & LRP	DIESEL 0.05%	DIESEL 0.005%	ILL. PAR.
GAUTENG PUMP PRICE (SA c/l) AS FROM 02/06/2021	1,713.000	1,691.000	-	-	-
WHOLESALE PRICE (SA c/l) AS FROM 02/06/2021	-	-	1,466.620	1,471.020	877.488
SINGLE NATIONAL MAXIMUM RETAIL PRICE	-	-	-	-	1,102.000
BASIC FUEL PRICE - 11/06/2021 (SA c/l)	720.874	712.542	701.208	704.423	681.347
PRESS RELEASE CONTRIBUTION TO BFP 02/06/2021 - 11/06/2021 (SA c/l)	717.170	705.170	679.630	684.030	664.128
UNIT OVER/(UNDER) RECOVERY - 11/06/2021 (SA c/l)	(3.704)	(7.372)	(21.578)	(20.393)	(17.219)
AVERAGE BASIC FUEL PRICE 28/05/2021 - 11/06/2021	710.912	702.587	691.796	695.418	670.726
AVERAGE UNIT OVER/(UNDER) RECOVERY 28/05/2021 - 11/06/2021	8.986	5.310	(17.620)	(17.116)	(12.052)

ANALYSIS MOVEMENT OF AVERAGE OVER/(UNDER) RECOVERY

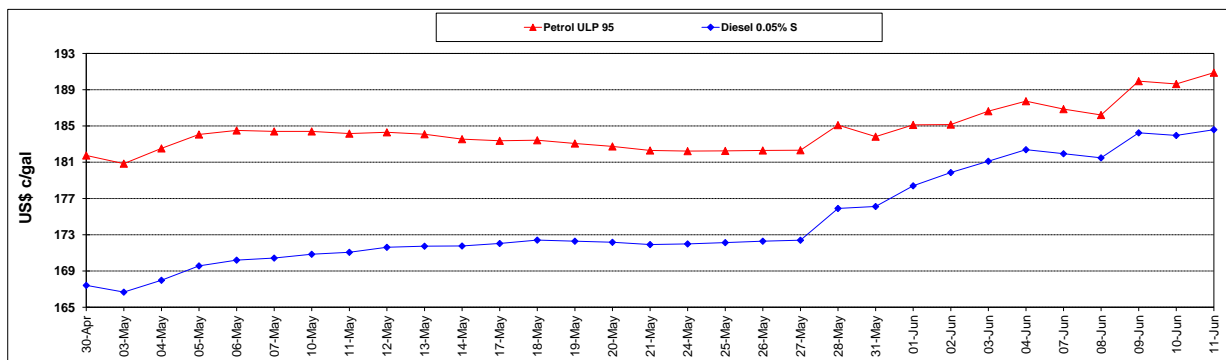
	PETROL 95	PETROL 93	DIESEL 0.05%	DIESEL 0.005%	ILL. PAR.
- MOVEMENT IN INTERNATIONAL PRODUCT PRICES	(15.051)	(18.445)	(41.011)	(40.628)	(34.731)
- MOVEMENT IN EXCHANGE RATE	24.036	23.755	23.390	23.513	22.678
AVERAGE UNIT OVER/(UNDER) RECOVERY 28/05/2021 - 11/06/2021	8.986	5.310	(17.620)	(17.116)	(12.052)

R/\$ EXCHANGE RATE - (R/\$13.5735- 11/06/2021)

EXCHANGE RATE USED IN BASIC FUEL PRICE



INTERNATIONAL PRODUCT PRICES OF BASKET USED IN BASIC FUEL PRICE



BASIC FUEL PRICE IN SA CENTS PER LITRE

